

# IllumiNeuro

## Coordinated Neuro & Cognitive Signaling

Precision signaling for durable cognitive clarity. Most cognitive tools push your brain harder. IllumiNeuro aims to help it communicate better — so focus feels stable, not forced.



# The Brain Doesn't Need More Stimulation

# It Needs Better Communication

Most people aren't underpowered. They're overloaded. The modern cognitive landscape is saturated with stimulants, nootropics, and performance enhancers that amplify output at the expense of sustainability.

Clarity fades not because the brain is weak — but because its signaling becomes noisy and inefficient. When neural pathways are overwhelmed with competing signals, cognitive performance degrades despite adequate neurochemical resources.

# The Standard Formulation

## 48 mg Total Active Blend

Four peptides working in coordinated lanes to support cognitive efficiency across multiple neural pathways.

### PE-22-28

10 mg

### Pinealon

10 mg

### NA-Semax

20 mg

### NA-Selank

8 mg

Four peptides. Four signaling lanes. One coordinated objective: cognitive efficiency through multi-pathway support rather than single-target overstimulation.

❏ *There are no clinical studies on this exact four-peptide combination.* The value lies in the logic of the system design and the established mechanisms of each individual component.

 COMPONENT OVERVIEW

# The Components

Each peptide in the IllumiNeuro formulation addresses a distinct aspect of cognitive function. Rather than redundantly targeting the same pathways, these components distribute support across the neural architecture — creating resilience through diversity.

# NA-Semax

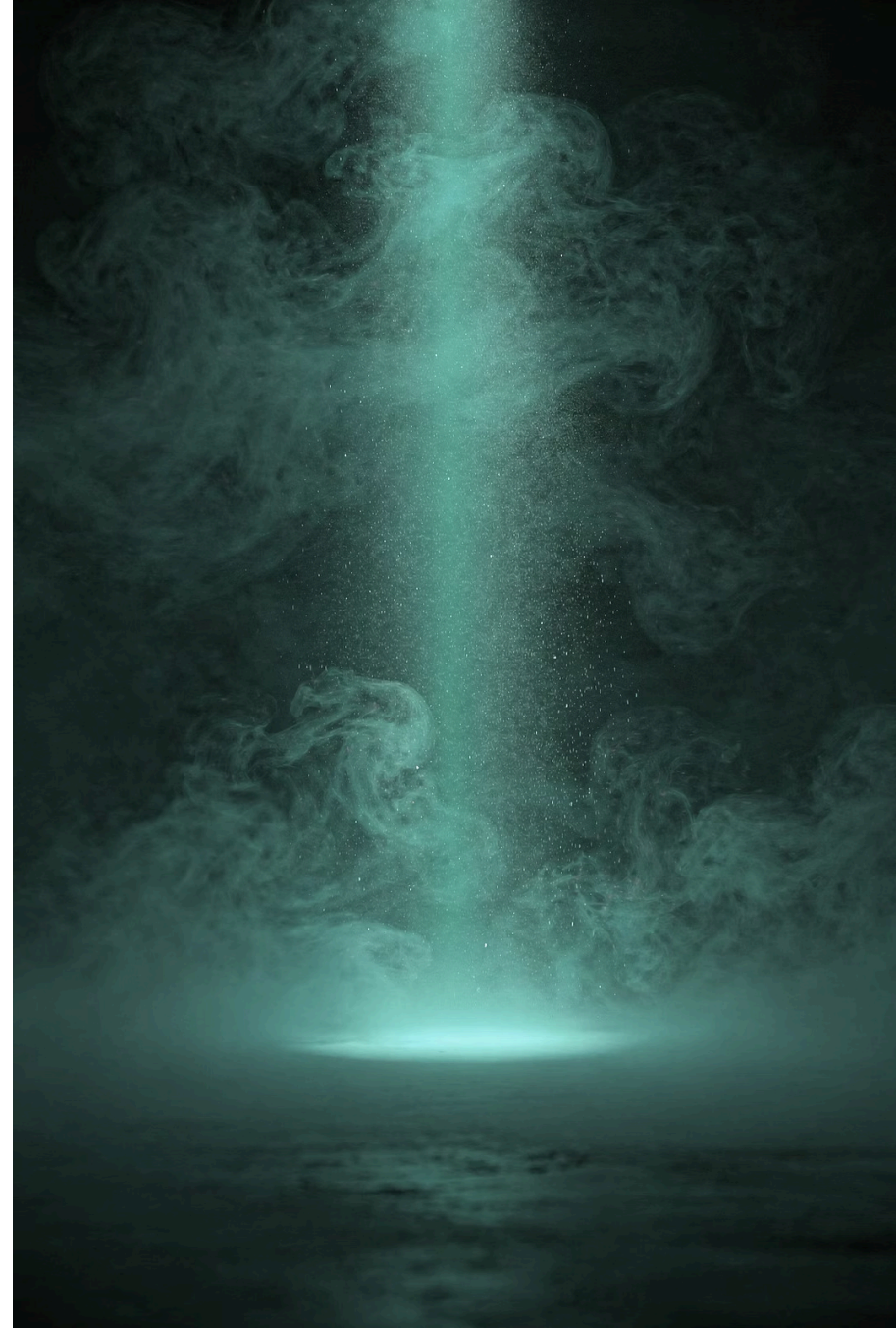
## Clarity & Drive

A modified form of Semax designed for improved stability and bioavailability. NA-Semax represents an evolution in peptide engineering, incorporating structural modifications that enhance its functional profile.

This peptide supports focus, executive function, and cognitive momentum — the sustained mental drive required for complex problem-solving and creative work.

**Mental model:** Increase signal strength without adding noise.

Where traditional stimulants amplify all neural activity indiscriminately, NA-Semax appears to enhance signal clarity in specific cognitive circuits while maintaining baseline stability elsewhere.





# NA-Selank

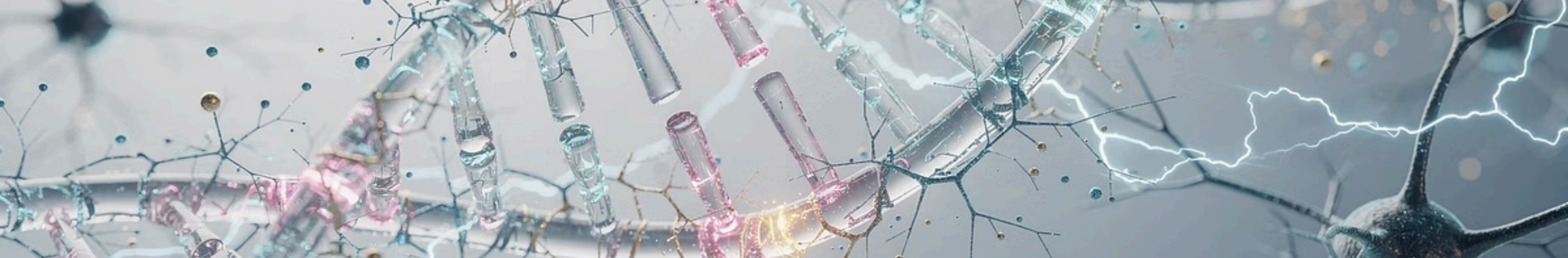
## Stress Calibration

A modified Selank variant associated with smoother emotional regulation and anxiety modulation. The nervous system's stress response is highly conserved and easily triggered — often inappropriately in modern contexts.

NA-Selank addresses the system that most frequently derails cognitive performance: chronic stress activation. By supporting more appropriate stress calibration, it prevents the cascade of hormonal and neurochemical disruptions that degrade focus and decision-making.

**Mental model:** Stability before speed.

High performance requires a stable foundation. Without stress regulation, even the most powerful cognitive enhancers produce inconsistent results as the system oscillates between hypervigilance and exhaustion.



# Pinealon

## Cell-Level Optimization

A short peptide associated with gene-expression signaling in neural tissue. Pinealon operates at a more foundational level than most cognitive interventions — influencing how neurons regulate their own internal processes.

Subtle. Foundational. Long-game. Rather than immediately altering neurotransmitter availability, it appears to modulate the cellular machinery that determines how efficiently neurons function over time.

**Mental model:** Upgrade the software inside the cell.

While other components address signaling between neurons, Pinealon targets optimization within neurons — supporting the cellular infrastructure that makes efficient signaling possible in the first place.

# PE-22-28

## Mood & Resilience Support

A research peptide often associated with antidepressant-like signaling pathways. Rather than providing blunt stimulation or temporary mood elevation, PE-22-28 appears to influence deeper mood tone and emotional adaptability.

Cognitive performance is inseparable from emotional state. Depression, anhedonia, and emotional blunting don't just feel bad — they actively impair executive function, memory consolidation, and motivation.

**Mental model:** Reinforce emotional infrastructure so cognition stays online.

By supporting the emotional resilience systems, PE-22-28 helps maintain the psychological conditions under which high-level cognitive function is actually possible. Mood isn't a luxury — it's a prerequisite.

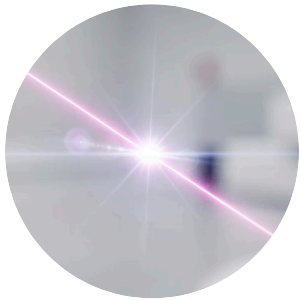


 SYSTEMS INTEGRATION

# How It Works Together

The true innovation in IllumiNeuro isn't any single component — it's the architecture of their combination. Each peptide addresses a different vulnerability in the cognitive system, creating redundancy and resilience across multiple pathways.

# Multi-Pathway Alignment



## Focus

NA-Semax supports attention and executive control



## Calm Regulation

NA-Selank modulates stress response systems



## Cellular Optimization

Pinealon influences gene expression and cellular health



## Mood Resilience

PE-22-28 reinforces emotional stability pathways

Instead of pushing one neurotransmitter to exhaustion, IllumiNeuro distributes support across the system. This reduces reliance on any single pathway and creates a more robust cognitive profile that degrades gracefully under stress.

# Why Traditional Cognitive Stacks Plateau

## The Conventional Approach

### Overemphasize Dopamine

Single-pathway dependence creates tolerance and eventual dysfunction

### Rely on Stimulation

Amplification without optimization leads to burnout cycles

### Ignore Stress Physiology

Performance collapses when cortisol dysregulation goes unaddressed

### Ignore Cellular Health

Long-term capacity requires foundational cellular optimization

## They Chase Intensity

Most cognitive enhancement strategies optimize for peak performance in isolation — pushing harder on the gas pedal without considering fuel efficiency, engine maintenance, or road conditions.

This approach works until it doesn't. Tolerance develops. Side effects accumulate. Performance becomes erratic.

**IllumiNeuro targets coordination** — ensuring all systems work together efficiently rather than driving any single system to exhaustion.

# What People Typically Notice

01

---

## Cleaner Mental Energy

Sustained cognitive output without the jittery overstimulation or afternoon crashes associated with stimulants

02

---

## Reduced Emotional Volatility

More stable mood baseline with fewer dramatic swings in response to stressors or setbacks

03

---

## More Consistent Motivation

Engagement with tasks feels less effortful and more naturally sustained throughout the day

04

---

## Improved Task Engagement

Enhanced ability to initiate and maintain focus on cognitively demanding work

05

---

## Less Cognitive Fatigue

Mental endurance improves — the end of the workday doesn't leave you completely depleted

Not a spike. A stabilization. The subjective experience is less about dramatic enhancement and more about removing the friction that typically degrades performance.

# A Simple Mental Model

## Before

Chaotic overlapping signals, noisy communication



## After

Organized clear channels, efficient information flow

**Think of the brain like a trading floor.** In a poorly organized trading environment, everyone is shouting over each other. Information gets through eventually, but it's slow, error-prone, and exhausting.

Traditional cognitive tools are like giving everyone a megaphone — they shout louder, but the fundamental communication problem remains. **IllumiNeuro improves the communication system itself.**

Fewer crossed wires. Faster, cleaner decisions. Less energy wasted on signal filtering and error correction.

# Where It Fits

## Positioning

IllumiNeuro is best understood as infrastructure rather than intervention — a foundation that makes other optimization strategies more effective.

### Cognitive Foundation Layer

The base upon which other performance strategies can build more effectively

### Stress-Resilience Enhancer

Maintains cognitive function under conditions that would typically degrade performance

### Systems Amplifier

Complements mitochondrial support, sleep optimization, and metabolic interventions

---

It is not a stimulant replacement — don't expect an immediate subjective rush. It's a systems amplifier that makes your baseline more robust and your peak performance more accessible and sustainable.



# In Short...

IllumiNeuro isn't about forcing focus. It aligns multiple signaling pathways so clarity becomes more stable — and more sustainable.

By supporting cognitive function across multiple dimensions — focus, stress regulation, cellular health, and emotional resilience — it creates a foundation for consistent high-level performance without the brittleness and eventual burnout of single-pathway interventions.

The result is cognition that feels less like pushing through resistance and more like operating at your natural capacity — sustained, stable, and reliably accessible when you need it.