

CJC-1295: Understanding the GHRH Family

Precision signaling for smarter growth hormone output... Restoring the rhythm behind recovery, resilience, and recomposition.



The CJC Signaling Family

Restoring Rhythm. Strengthening the Signal.

CJC-1295 (No DAC) / Mod GRF 1-29

Precision, short-acting growth hormone signaling that mirrors natural pulses — when progress stalls, it's often a timing issue, not an effort issue.

CJC-1295 (With DAC)

Long-acting, sustained signaling that keeps the growth environment elevated — less about sharp pulses, more about steady support.

Ipamorelin (Stacked)

CJC initiates the conversation. Ipamorelin amplifies it — together they create stronger, more physiologic pulses without forcing the system.

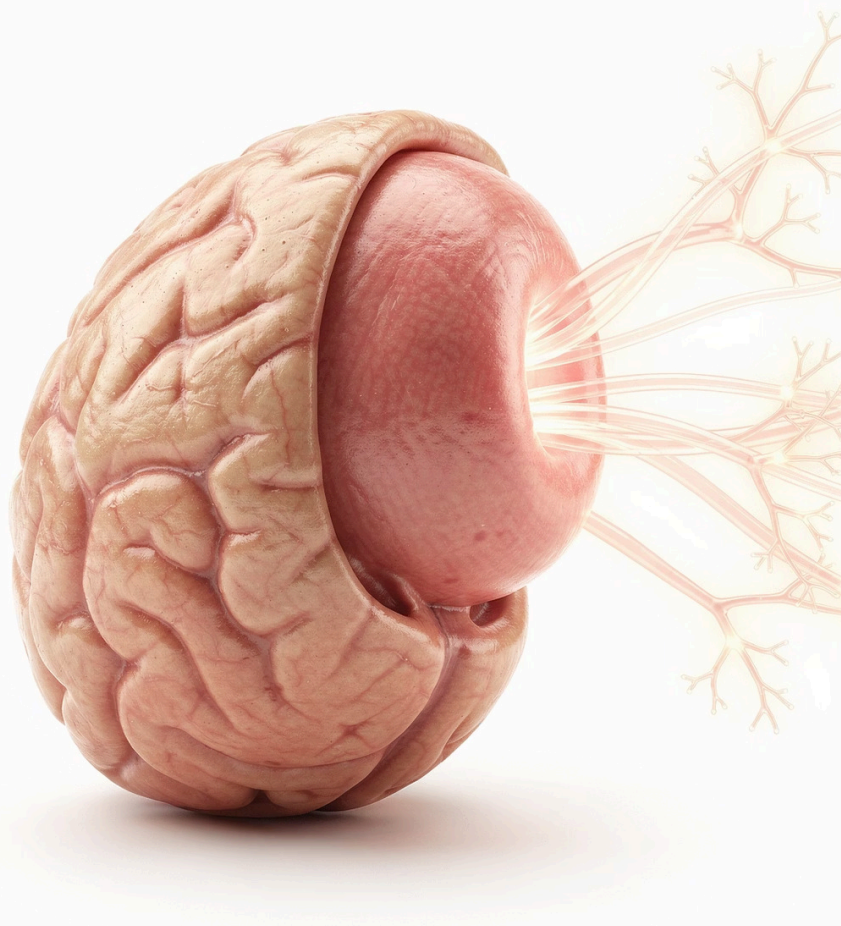
The Real Problem

Growth hormone doesn't disappear overnight. It fades slowly, eroding the foundations of health and performance in subtle but measurable ways.

Sleep quality weakens. Recovery between training sessions slows. Body composition improvements plateau despite consistent effort. Physical and mental resilience gradually declines.

Most people respond by trying to "push harder" — adding volume, intensity, or supplementation without addressing the underlying issue.

But growth hormone was never meant to be forced through brute effort. It was designed to pulse naturally, in rhythm with your body's circadian and metabolic signals.



What CJC Is Really Doing

CJC-1295 belongs to a class of compounds called **GHRH analogs** — synthetic molecules that mimic the structure and function of natural growth hormone-releasing hormone.

Here's the critical distinction: CJC doesn't replace growth hormone. It doesn't introduce exogenous GH into your system. Instead, it signals your pituitary gland — the body's command center for hormonal regulation — to release its own endogenous growth hormone.

Think of it as restoring a communication pathway rather than overriding it. CJC provides a "green light" that allows natural GH pulses to occur with greater consistency and amplitude.

This approach respects your body's existing architecture rather than bypassing it entirely.

CRITICAL DISTINCTION

The Three Versions (And Why They Matter)

Not all CJC formulations are created equal. The variations aren't marketing hype or minor technical details — they represent fundamentally different pharmacological approaches.

The primary difference comes down to one factor: **half-life**.

Half-life determines how long the compound remains active in your system, which in turn dictates dosing frequency, timing strategy, and the overall pattern of GHRH signaling your body experiences.

Understanding these differences is essential for making informed decisions about which approach aligns with your goals and physiology.

1 CJC-1295 (No DAC)

SHORT-ACTING

Also known as **Mod GRF 1-29**, this is the short-acting variant of the GHRH analog family.

Half-Life

Approximately 30 minutes in circulation

Dosing Pattern

Multiple administrations aligned with natural pulse windows

Timing Strategy

Often coordinated with sleep onset or training sessions

What it is: A short-acting GHRH analog designed to mimic your body's natural pulsatile release pattern. It provides a discrete signal that triggers GH release and then clears from the system rapidly.

Why it exists: Precision and control. You determine exactly when the signal occurs, allowing you to align GHRH stimulation with key physiological windows — deep sleep stages, post-training recovery periods, or other strategic timing.

Mental model: Think of it as a doorbell. You press it, get an immediate response, and the signal ends. Clean, discrete, controllable.

2 Mod GRF 1-29

NOMENCLATURE NOTE

Key Understanding

Technically identical to CJC-1295 (No DAC)

This is where terminology can create confusion. Mod GRF 1-29 refers to the same active peptide fragment as CJC-1295 without DAC.

Different name, identical molecular structure, same short-acting pharmacological behavior.

- **Half-life:** ~30 minutes
- **Usage pattern:** Pulsatile administration
- **Mechanism:** Sharp, controlled GHRH signaling

This is the "clean pulse" version — designed for those who want to work *with* natural rhythms rather than override them.

3 CJC-1295 (With DAC)

LONG-ACTING

DAC stands for **Drug Affinity Complex** — a molecular modification that fundamentally changes the compound's behavior in your system.

This is where the pharmacology shifts from pulsatile to sustained.

Extended Half-Life

Approximately 5–8 days in circulation, compared to 30 minutes for the non-DAC version

Reduced Frequency

Requires much less frequent administration — typically once or twice per week

Sustained Elevation

Creates a continuously elevated GHRH environment rather than discrete pulses

Instead of creating a short, sharp pulse that mirrors natural physiology, CJC with DAC produces sustained GHRH signaling over multiple days.

Mental model: Not a doorbell. More like adjusting the thermostat up and leaving it there for the week.

Why They're Different

The distinction between short-acting and long-acting variants isn't just about convenience or dosing frequency. It represents two fundamentally different philosophies of hormonal optimization.

Version	Signal Style	Half-Life	Pattern
Mod GRF / No DAC	Sharp pulse	~30 min	Natural rhythm
CJC with DAC	Sustained signal	5–8 days	Continuous elevation

Short-Acting Approach

Precision and rhythm. Mimics natural pulsatility. Requires timing awareness and more frequent administration.

Long-Acting Approach

Steady elevation. Reduces timing sensitivity. Creates a sustained GHRH environment throughout the week.

Different tools. Different strategies. Neither is inherently superior — the choice depends on your goals, lifestyle, and physiological response.

Where Ipamorelin Fits

Ipamorelin operates through an entirely different mechanism. It is *not* a GHRH analog.

Instead, Ipamorelin belongs to the **GHRP class** (Growth Hormone Releasing Peptides) and functions as a **ghrelin receptor agonist**. It mimics the action of ghrelin, the "hunger hormone" that also plays a crucial role in GH regulation.

CJC-1295 (GHRH Analog)

Signals the pituitary: "Release growth hormone"

Ipamorelin (Ghrelin Agonist)

Amplifies the signal: "Release *more* growth hormone"

If CJC provides the green light for GH release, Ipamorelin functions as the amplifier that turns up the volume.

When used together, they create a more complete and physiologically robust stimulus for growth hormone secretion.

Why Stacking Works

The pituitary gland doesn't respond to a single signal in isolation. It integrates multiple inputs to determine the magnitude and timing of growth hormone release.

Two primary pathways regulate GH secretion:



GHRH Pathway

The "permission" signal that tells the pituitary it's time to release GH



Ghrelin Pathway

The "amplification" signal that increases the magnitude of GH release

When **both pathways are activated simultaneously**, the result is synergistic — the GH pulse is larger and more complete than either signal could produce alone.

This isn't redundancy. It's how your body was designed to work. Using CJC and Ipamorelin together recreates the natural dual-signal architecture that governs optimal GH secretion.

More physiologic. More complete. More aligned with endogenous patterns.

Short-Acting + Ipamorelin

~ PULSATILE STRATEGY

Combining short-acting CJC (Mod GRF / No DAC) with Ipamorelin creates a protocol centered on **defined, controlled pulses** that align with your body's natural rhythms.



Discrete Pulses

Sharp, time-limited GH release events that mirror natural secretion patterns



Sleep-Aligned Release

Timed to coincide with deep sleep stages when endogenous GH secretion is naturally highest



Training-Aligned Recovery

Strategic dosing around training windows to support acute recovery and adaptation

This approach feels *rhythmic* — you're working *with* your body's existing pulse architecture, enhancing what's already there rather than creating an artificial steady state.

It requires more attention to timing and coordination, but provides precision control over when and how GH signaling occurs.

Long-Acting + Ipamorelin

SUSTAINED STRATEGY

Combining CJC-1295 with DAC and Ipamorelin creates an approach centered on **sustained elevation** rather than discrete pulses.



Elevated Baseline GH Environment

Maintains a continuously elevated GHRH signal throughout the week, creating a favorable hormonal backdrop



Reduced Timing Sensitivity

Less dependent on precise timing around sleep or training — the sustained signal provides consistent support



Broader Systemic Support

Supports recovery, body composition, and sleep quality through maintained elevation rather than punctuated peaks

This approach feels *steady*. Less focus on timing windows, more emphasis on creating an optimized hormonal environment that persists throughout the week.

It simplifies administration and removes much of the strategic complexity around dosing timing.

Why Traditional Approaches Stall

Most optimization strategies focus exclusively on outcomes: building more muscle, losing more fat, improving sleep, accelerating recovery.

But they *ignore the signaling infrastructure* that determines whether those outcomes are even possible.

❏ You can't force adaptation if the communication systems that enable adaptation are compromised.

CJC doesn't force growth. It doesn't bypass your body's regulatory systems. It doesn't introduce external hormones that override endogenous production.

It improves communication.

When the pituitary can hear the signal clearly, when GHRH pathways function optimally, when the conversation between brain and endocrine system is restored — that's when the system can improve.

This is infrastructure work, not outcome manipulation. And infrastructure improvements create compounding returns.

What People Typically Notice

When signaling improves, the changes aren't usually dramatic or explosive. Growth hormone optimization doesn't produce overnight transformations.

Instead, users typically report gradual, compounding improvements across multiple systems:



Better Sleep Depth

Improved sleep architecture, particularly deeper slow-wave sleep phases where GH is naturally highest



Improved Recovery

Faster bounce-back between training sessions, reduced persistent soreness, better readiness



Subtle Composition Shifts

Gradual improvements in body composition — not rapid fat loss, but sustained favorable changes



Better Resilience

Improved capacity to handle training volume and intensity without breaking down

These aren't explosive changes. They're the kind of steady, compounding improvements that accumulate over weeks and months — the foundation of sustainable progress.

A Simple Mental Model

Core Concept

Your body already knows how to pulse growth hormone. The machinery exists. The pathways are built-in.

What declines over time isn't the capacity — it's the clarity of the signal.



CJC restores the conversation

Provides clear GHRH signaling to the pituitary



Ipamorelin strengthens the volume

Amplifies the magnitude of GH release

One compound sets the **rhythm**. The other boosts the **amplitude**.

Together, they don't replace your physiology — they restore the communication pathways that allow it to function optimally.



How They Can Work Together

Understanding the interplay between these compounds reveals flexible strategic options rather than rigid protocols.

1

Short-Acting Variants

Create precision pulses aligned with specific physiological windows — sleep, training, recovery

2

Long-Acting Variants

Establish a sustained hormonal environment with reduced timing sensitivity

3

Ipamorelin Addition

Amplifies *either* approach, increasing the magnitude of GH response



Key insight: This framework isn't about replacing physiology. It's about restoring optimal function to systems that have degraded over time or under chronic stress.

The goal isn't to override your body's wisdom. It's to give it the tools to express that wisdom fully.

In Short...

CJC's Role

Doesn't force growth hormone production — it *signals* your pituitary to release what's already there

Ipamorelin's Role

Makes the signal stronger, amplifying the magnitude of GH release through a complementary pathway

Short-Acting = Rhythm

Precision pulses aligned with natural patterns. Strategic timing. Controlled signaling windows.

Long-Acting = Elevation

Sustained environment. Reduced timing sensitivity. Steady hormonal support.

Both approaches respect the architecture your body was built with. Neither forces outcomes. Both restore the signaling infrastructure that makes adaptation possible.

The choice between them depends on your goals, lifestyle, and physiological response — not on which is objectively "better."