

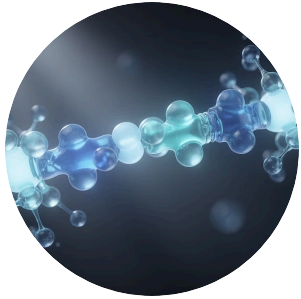
# MELANOTAN 2

## Coordinated Pigment Signaling & Adaptive Resilience

MT2 strengthens the body's pigment response by enhancing the intensity of the signal — not just the exposure. This presentation explores how a synthetic peptide analog can fundamentally shift how your biology responds to ultraviolet stress, moving beyond surface-level tanning to systemic adaptive capacity.

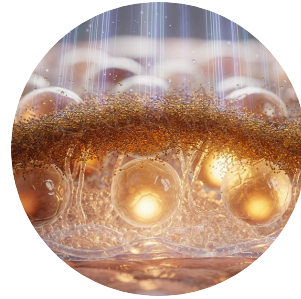
# Melanotan 2 (MT2)

## Coordinated Pigment Amplification



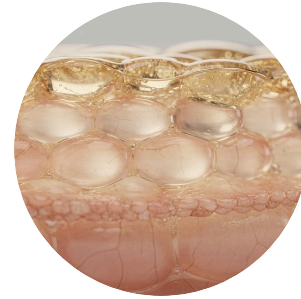
### Amplified Adaptive Signaling

MT2 enhances the strength of pigment signaling pathways to accelerate adaptive response, increasing melanocortin receptor activity throughout the body.



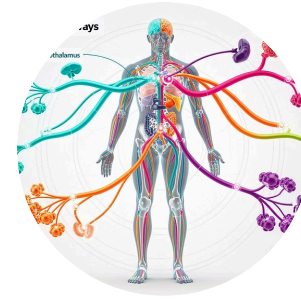
### From Exposure to Efficiency

Improves how the system converts UV stress into protective melanin, optimizing the conversion process rather than merely increasing exposure.



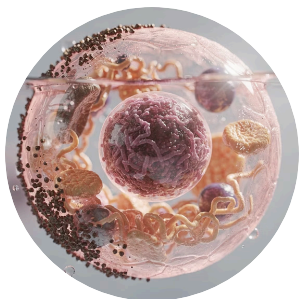
### Resilience Through Readiness

Supports faster, more reliable tanning through improved pigment responsiveness, priming the melanocyte network before UV exposure occurs.



### Signal With Systemic Reach

Engages the broader melanocortin network — not just surface-level color. This peptide interacts with MC1R and other receptors throughout multiple tissues.



### Capacity Over Cosmetics

The tan is visible. The real benefit is upgraded protective infrastructure that buffers oxidative stress and UV damage at the cellular level.



# The Real Issue Isn't Skin Tone It's Fragility.

Most people think tanning is cosmetic. But the real issue is sensitivity — a system-level vulnerability that manifests as reactive, inflamed, poorly adapted skin.

Burn easily. Inflammate quickly. React poorly to light exposure. These aren't aesthetic problems. They're indicators of a pigment system that lacks adaptive capacity.

The system isn't adapting — it's overreacting. Each UV exposure becomes a crisis event rather than a stimulus for measured, protective response. This creates a cycle of damage, inflammation, and incomplete recovery that compounds over time.

**Traditional Tanning Is Just  
Exposure**

**More Sun. More  
Risk.**

The standard approach is simple and fundamentally flawed:

01

---

### **Add More UV**

Increase time in sun or tanning beds, accumulating photodamage with each session.

02

---

### **Hope the Skin Adapts**

Cross fingers that melanocytes respond faster than DNA damage accumulates.

03

---

### **Deal With Damage Later**

Accept burns, peeling, and long-term photoaging as inevitable costs.

That's not optimization. That's forcing the system. It's output without upgrading the signal — like trying to get faster by running harder instead of improving your cardiovascular efficiency.

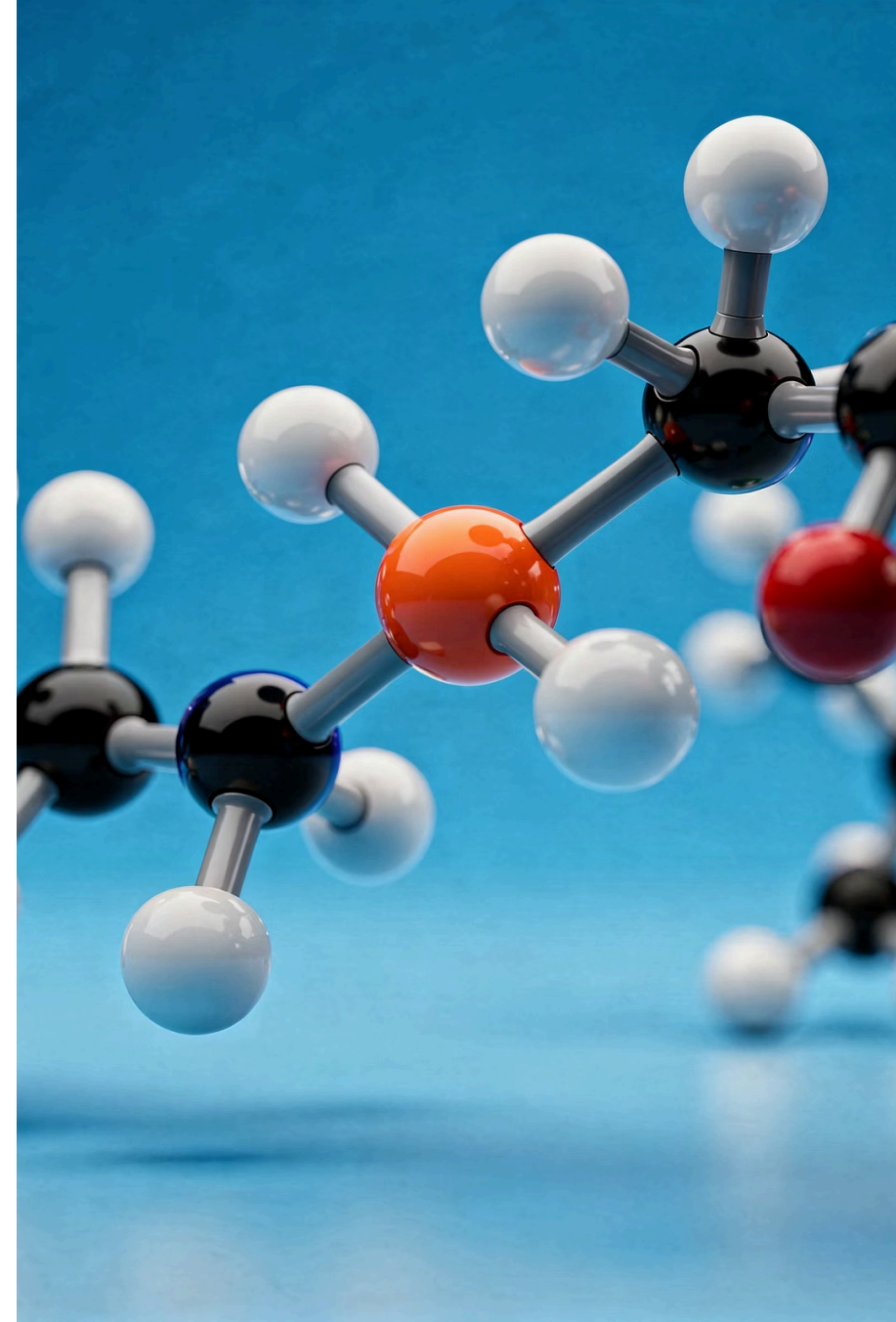
# Melanotan 2 Is a Signal, Not a Shortcut

## It nudges biology to respond differently.

Melanotan 2 is a synthetic analog of alpha-melanocyte stimulating hormone ( $\alpha$ -MSH), a natural signaling molecule involved in pigment production. This peptide mimics the structure and function of the endogenous hormone, binding to melanocortin receptors with high affinity.

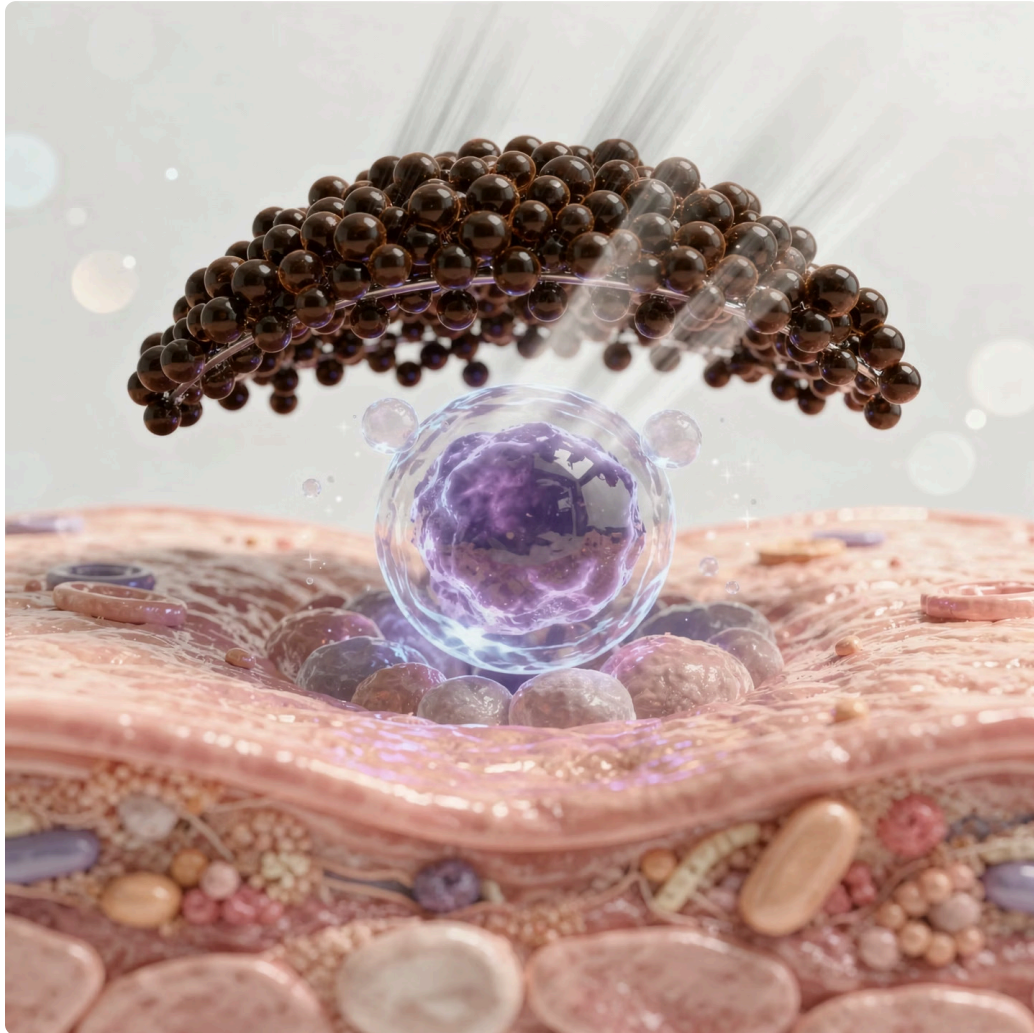
Instead of forcing color from the outside through repeated UV damage, it enhances the body's internal pigment signaling cascade. It operates at the receptor level, activating the same pathways your body uses naturally — just with greater intensity and consistency.

- ❏ **Different strategy. Different layer of intervention.** This isn't topical pigmentation or forced melanin synthesis. It's signal amplification within the existing biological framework.



# Think Infrastructure, Not Spray Paint

It upgrades the response — not the surface.



Melanin isn't just color. It's protective infrastructure embedded in the skin's defensive architecture.

It absorbs and disperses UV energy before it reaches vulnerable DNA. It neutralizes free radicals generated by photodamage. It creates a physical barrier against wavelengths that would otherwise penetrate deeper tissue layers.

Melanotan 2 increases the system's ability to produce that infrastructure more efficiently, improving melanocyte activity and melanin synthesis without requiring proportional increases in UV exposure.

Signal → Capacity → Output.

This is biology working smarter, not harder.

# Why This Feels Different

## Because it works upstream.

1

### Traditional Tanning

UV exposure → inflammation → adaptation (maybe)

Brute force approach that relies on damage as the primary signal.

2

### Melanotan 2

Signal enhancement → increased pigment readiness → improved tolerance

Proactive signaling that primes the system before stress occurs.

---

It doesn't replace sun exposure. It changes how the system reacts to it. The peptide creates a state of heightened melanogenic readiness, allowing melanocytes to respond more rapidly and robustly when UV stimulus arrives.

Less brute force. More intelligent adaptation. The difference between battering down a door and having the right key.

# It's Not Just About Color

## It's about adaptive tone.

People notice visible changes within days to weeks of initiating MT2 protocols:

### More Even Pigmentation

Melanin distributes uniformly across photoexposed areas, reducing patchiness and splotching common with traditional tanning.

### Faster Tanning Response

Visible darkening occurs with less cumulative UV exposure, reducing the total damage burden required for color change.

### Reduced Tendency to Burn

The threshold for erythema increases as baseline melanin density rises, providing a wider margin of safety.

### Deeper Baseline Tone

Melanocytes maintain elevated activity even without constant UV exposure, sustaining pigmentation longer.

But what's really happening beneath these cosmetic observations is improved pigment signaling efficiency — a fundamental upgrade in how keratinocytes and melanocytes communicate under oxidative stress.

📌 It's capacity, not cosmetics. The aesthetic outcome is secondary to the functional improvement.

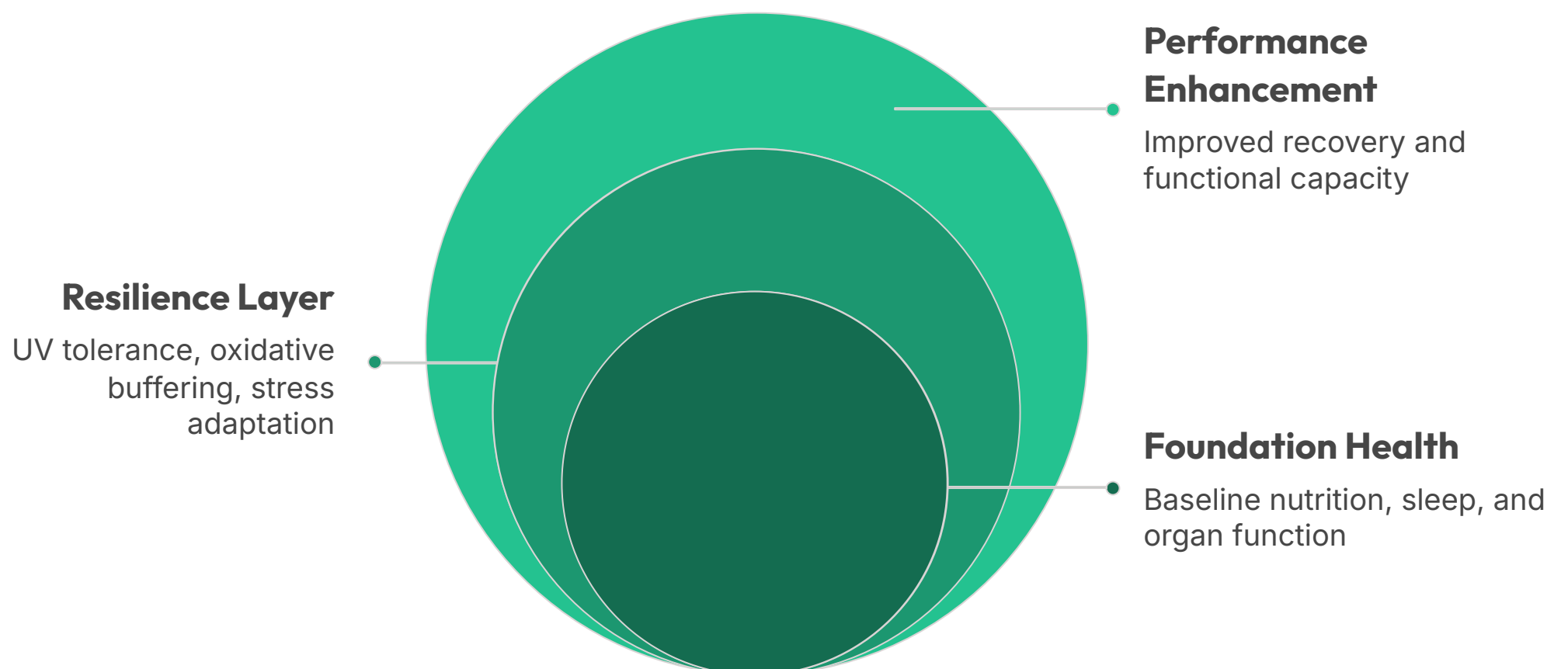
# The Broader System Context

## This sits in the resilience layer.

Melanotan 2 doesn't build muscle mass or increase contractile strength. It doesn't directly alter metabolic rate or substrate utilization. It doesn't enhance cognitive performance or cardiovascular output.

What it does is improve **environmental tolerance** — specifically, your tissue's ability to buffer and respond to UV stress without catastrophic damage.

That makes it a middle-layer tool, positioned between foundation health (nutrition, sleep, metabolic function) and performance enhancement (strength, speed, endurance).



Resilience tools don't make you faster or stronger. They make you harder to break.

# Stacking Logic

## Where It Belongs

Melanotan 2 pairs conceptually with other resilience-focused interventions that strengthen adaptive capacity rather than force performance outcomes.



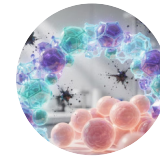
### Mitochondrial Support

CoQ10, NAD+ precursors, and PQQ enhance energy resilience and oxidative stress management at the cellular level.



### Collagen & Skin Integrity Tools

Vitamin C, glycine, and proline provide structural support for dermal architecture and repair mechanisms.



### Antioxidant Systems

Glutathione, vitamin E, and polyphenols buffer oxidative damage from UV exposure and environmental stressors.

---

**Why does this synergy exist?** Because pigment production is one protective system among many. Melanin synthesis occurs within a broader network of cellular defense mechanisms.

It reinforces infrastructure. It doesn't compete with it. Think: [resilience stack](#), not [performance stack](#).

# Why It's Not Flashy (And That's a Feature)

Melanotan 2 doesn't spike energy levels or create noticeable sympathetic activation. It doesn't produce dramatic sensations or acute performance changes. It doesn't feel "stimulating" in the way caffeine or beta-alanine might.

It quietly improves response capacity over days and weeks. The changes are cumulative and structural, not acute and pharmacological.

Like upgrading insulation in a building — you don't notice it until the storm hits. Or until you realize you're spending less energy maintaining equilibrium under stress.

The absence of drama is not a weakness. It's an indication that the mechanism operates at the right depth — systemic adaptation rather than acute perturbation.

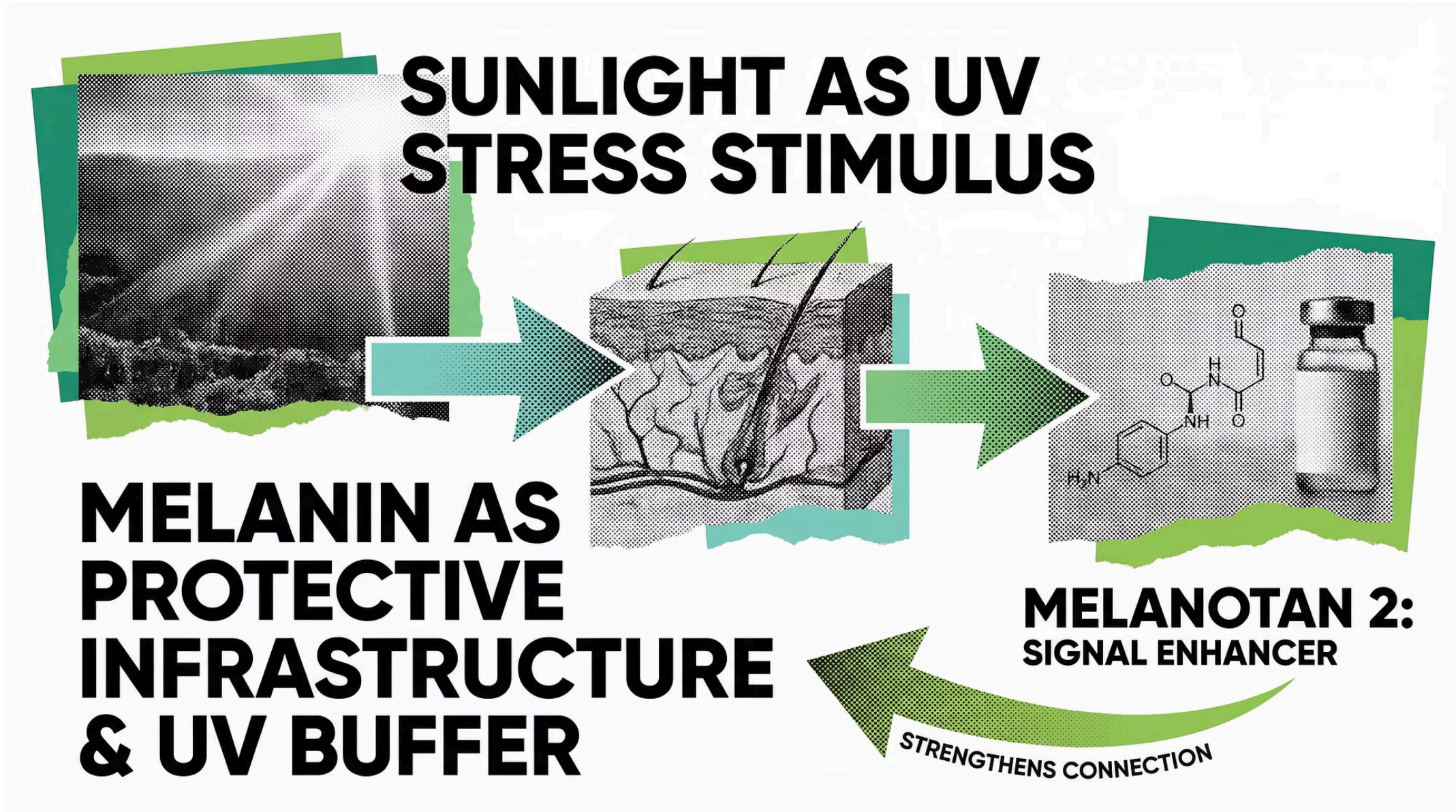
## What You Won't Feel

- Immediate energy boost
- Acute performance surge
- Stimulant-like effects
- Dramatic sensations

## What You Will Notice

- Gradual pigment deepening
- Reduced burn susceptibility
- Improved UV tolerance
- More even tanning

# The Mental Model



Sunlight is stress. Melanin is protection. Melanotan 2 enhances the signal that builds protection.

This framework helps clarify what MT2 does and doesn't do. It's not creating an artificial tan through external pigmentation. It's not forcing melanin synthesis through pharmacological coercion.

It's improving readiness — priming the melanocortin system to respond more effectively when environmental stress (UV exposure) arrives. The pigment response becomes faster, more robust, and more reliable because the upstream signaling is amplified.

**In Short...**

**Melanotan 2 doesn't create a tan.**

**It improves the system that makes one possible.**

---

The visible darkening is a downstream marker of enhanced melanocyte signaling, not the primary mechanism. The real value lies in the upgraded adaptive capacity — a skin system better equipped to handle UV stress with less damage accumulation.

This is biological optimization at the signaling level. Infrastructure improvement rather than superficial modification. A resilience tool positioned between foundational health and performance enhancement.

Use it accordingly. Understand what layer it operates on. Stack it intelligently with complementary resilience mechanisms. And recognize that the cosmetic outcome, while pleasant, is secondary to the functional upgrade beneath.